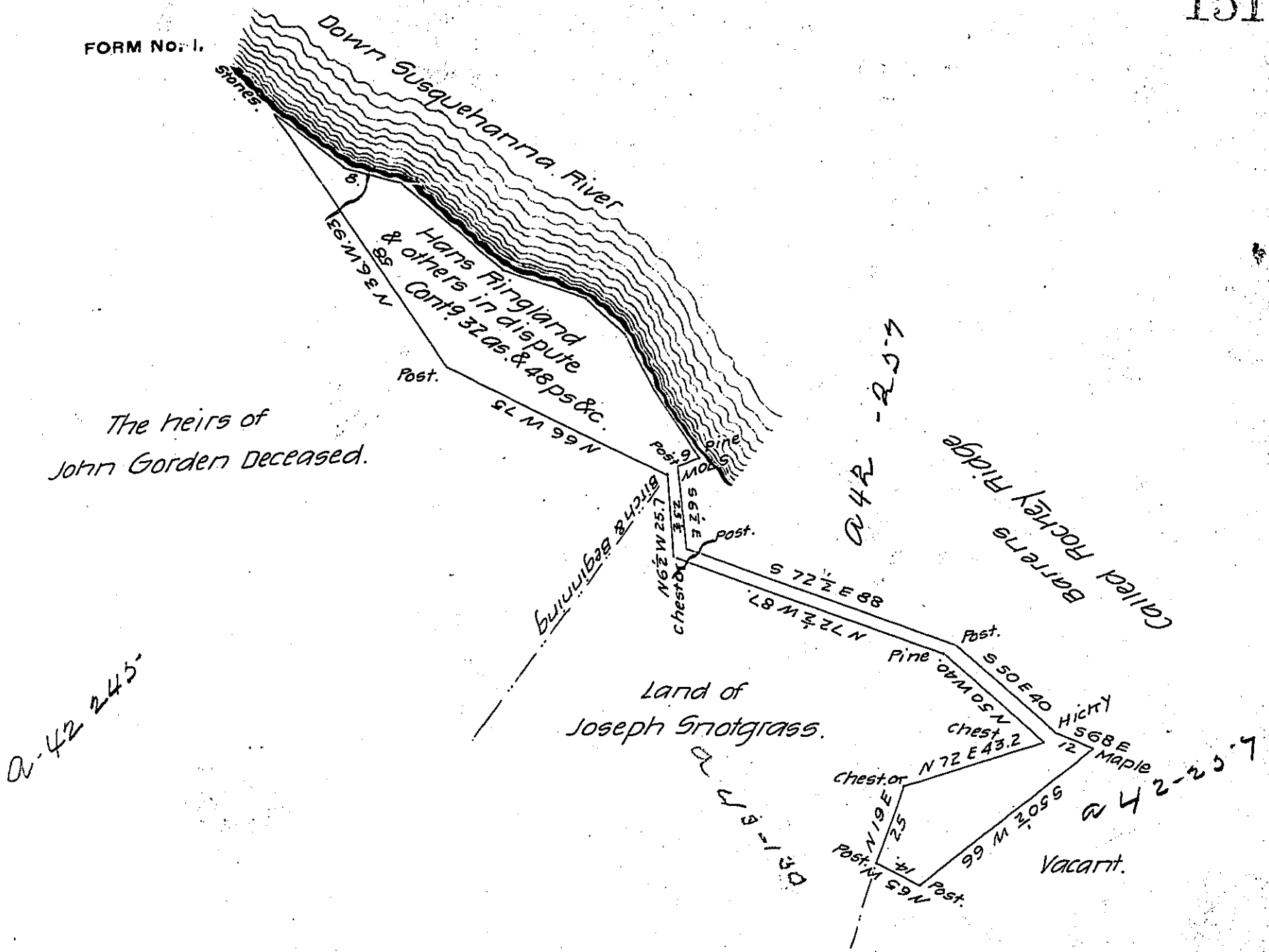


FORM No. 1.



The following are the Courses & distances along down the River from the stones to the pine above represented. Viz -  
 S. 53. E. 26 1/2  
 S. 75. E. 18  
 S. 52. E. 40  
 S. 73. E. 26  
 S. 50 1/2. E. 16.1  
 S. 30 1/2. E. 18  
 S. 34 1/2 E. 26

Situate in Lower Chanceford Township in the County of York, Containing as above set forth 329 & 48 perches and allowance of 6 per cent & c. Surveyed on the 11th day of May A.D. 1815. In Pursuance of a Warrant for 30 a granted to Hans Ringland and Robert Fullerton Junr. bearing date the 28th day of October A.D. 1814. I further beg leave to state that John Kirkpatrick and Mathew Campbell claims the whole of the land above described In pursuance of a Warrant for 50 a granted to them the said John Kirkpatrick and Mathew Campbell bearing date the 3d day of August A.D. 1814. Per

Perches 170.6 Richard T. Leech Esqr. Surveyor General Harrisburg, Pa. Jacob Spangler D.S.

IN TESTIMONY that the above is a copy of the original remaining on file in the Department of Internal Affairs of Pennsylvania, made conformably to an Act of Assembly approved the 16th day of February, 1833, I have hereunto set my Hand and caused the Seal of said Department to be affixed at Harrisburg, this twenty-fifth day of September 1906.

*Jacob S. Spangler*  
 Secretary of Internal Affairs.